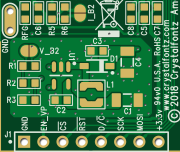


CFAL9664B-F-B1 / -B2



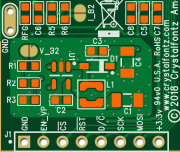
CrystalFontz  
CFA-10083 0v2



CFAL9664B-F-B1 / -B2



CrystalFontz  
CFA-10083 0v2



+3.3v 94v0 U.S.A. RoHS C7  
[www.crystalfontz.com](http://www.crystalfontz.com)



© 2018 CrystalFontz America, Inc.



1 2 3 4 5 6 7 8 9 10 11 12 13 14 15 16

CFA-10083 0v5

OLED

CRYSTALFONTS

CFA10084B-F-Bx

88x84 COLOR OLED

© 2018 Crystalonts

HEAD





1 5 10 15 20 22

CFA-10083 0v2  
OLED

CRYSTALFONTZ

CFAL9664B-F-Bx  
96x64 COLOR OLED

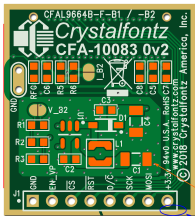
© 2018 Crystallfontz

0V2



Must use Router in this area

Score and break for panel is OK here



Score and break for panel is OK here

Must use Router in this area

Solder Paste is indicated in orange.

Silkscreen over copper/gold is intentional. Do not clip silkscreen to solder mask. (many places)



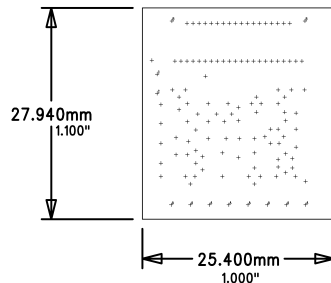
Pads are intentionally larger than solder masks. "Solder mask defined pads" Do not "open up" or back solder mask off. (many places)

Bare copper/gold extends to the exact edge of the board, trimmed by router. Do not back copper away from board outline. Edge is not plated. (2 places: entire perimeter, top and bottom)

LAYERS: 2  
 MATERIAL: FR4, RoHS, 94v0  
 THICKNESS: 1.6mm (~62 mils)  
 MINIMUM SPACING: 0.1778 mm (7 mils)  
 MINIMUM TRACE: 0.1778 mm (7 mils)  
 SMALLEST VIA: 0.3 mm drill in 0.6 mm pad  
 (11.81 mil drill in 23.62 mil pad)  
 FINISH: Gold (ENIG) RoHS  
 SILK SCREEN: White  
 SOLDER MASK: Green

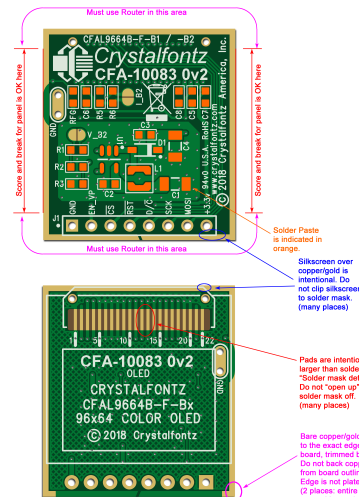
## >> IMPORTANT FABRICATION NOTES <<


- 1) Many pads have intentional undersize solder mask openings/oversize pads for physical strength.
- 2) Make top and bottom solder masks exactly as shown. Do NOT "open-up" the solder mask layers. This design uses "solder-mask-defined-pads".
- 3) Silkscreened Legend (white) must be clean and clear. Silkscreen legend must have good registration. Silkscreen is intentionally placed over bare copper. Do not clip silkscreen to soldermask layer.
- 4) Edges of board must be smooth. Use router. Do not use "score and break".
- 5) Board must be exactly like: CFA10083\_0v2\_PCB\_Preview.pdf



BARE TRACE BEYOND EDGE IS INTENTIONAL ESD HANDLING FEATURE. ROUTING WILL TRIM COPPER TO EXACT BOARD OUTLINE. SEE PDF "BOARD PREVIEW" FOR EXAMPLE.

SIZE	QTY	SYM	PLATED	TOL
0.3	115	+	YES	+/-0.0
1	8	+	YES	+/-0.0
0.825	2	+	YES	+/-0.0
0.9	2	+	YES	+/-0.0



 <b>Crystallfontz</b> 12412 East Saltese Avenue Spokane Valley, WA 99216 USA Tel: (509) 892-1200 <a href="http://www.crystallfontz.com">http://www.crystallfontz.com</a> Copyright © 2018 Crystallfontz America, Inc.	PROJECT		CFA-10083		VERSION	0v2
	PCB		REVISION		DATE	
	PCB10083		0v2		2018-04-28	
	LAYER		FILE NAME			
Drill Drawing/Notes		C-CFA10083_0v2_DD.pho				