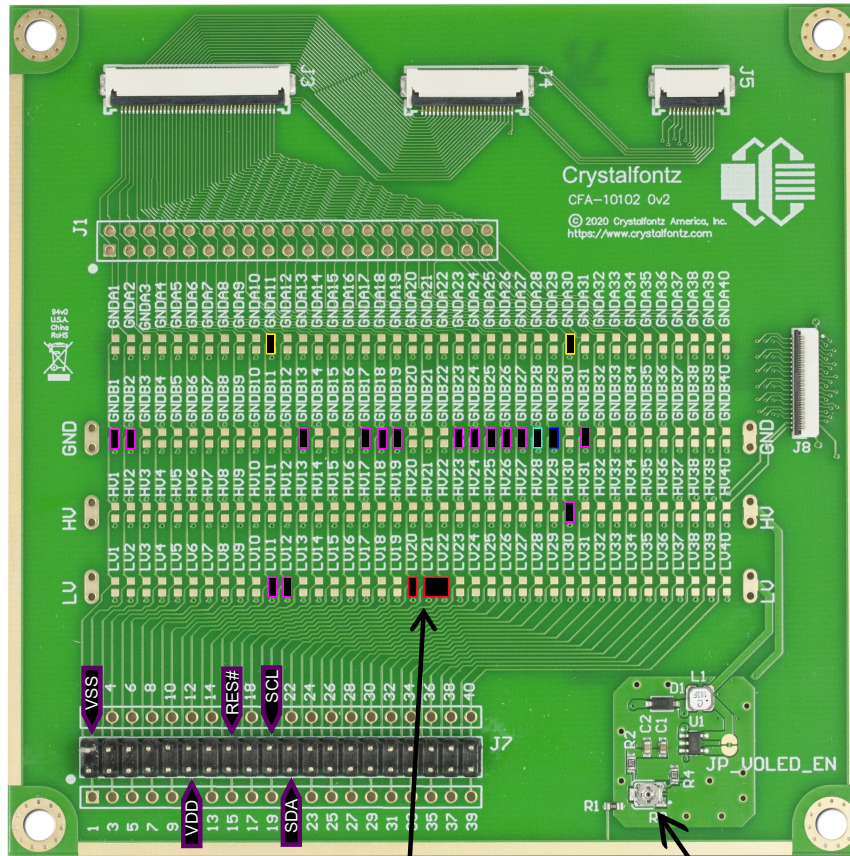


Getting Started Guide

Bring up the CFAL12864K using
the Generic Adapter Board CFA10102

Configured for I2C



Color Guide

- 1uF Capacitor
- 0Ω Resistor
- 4.7uF Capacitor
- 1MΩ Resistor
- 1kΩ Resistor
- Input from 3v3 controller

Pull I2C clock and data lines high
Tie data lines together

Adjust the HV loop here to
provide the high voltage
(VCC 12-14v)

Solder each position with the corresponding component as specified in the color guide. All land patterns are for 0603 Components.

See the CFAL12864K datasheet for information on pin function, electrical characteristics, etc.